

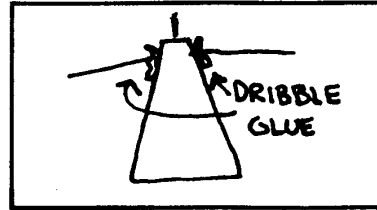


Santa Mold Project

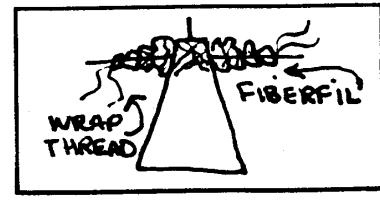
- Supplies:**
- | | |
|--|--------------|
| Santa Face and Hand molds | Glue Gun |
| 6 oz. flesh colored polymer clay | Toothpick |
| 1 oz. red and green polymer clays | Xacto knife |
| Minuscule amount of acrylic paint in brown, white, blue, red, black | Ceramic tile |
| Translucent makeup powder | |
| Large Styrofoam cone (4" diameter - 10 - 11 inches tall) | |
| Oval Wooden Base, White Mohair, Black Boa, | |
| 15" white ribbon, ½ yd. red print fabric and ½ yd. green print fabric, crochet needle, 12 inches medium gauge wire, sewing thread, wooden skewer | |

Preparing the Cone:

1. Slice off approximately 1 inch from the top of the cone to create a wider "tip".
2. Poke the 12 inches of wire through the cone approximately one inch below the sawed-off top of the cone. Using your glue gun, dribble glue on each side of the cone, securing the wire into the cone.



3. Wrap pieces of fiberfill around the wire, creating an arm and shoulder thickness. Secure the fiberfill by wrapping the thread around and around the fiberfill to hold it.



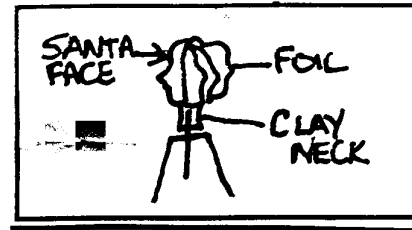
Molding Santa's Head and Hands:

1. Dust the inside of the molds with translucent powder to prevent the clay from sticking.
2. Condition clay by kneading according to directions. Roll little balls of clay, about the size you need to fill each cavity of the hand mold, until very smooth and all the crease lines are gone.
3. Push the clay into each cavity of the molds until completely full. Don't over fill.
4. Dust the inside hand mold with translucent powder to prevent the clay from sticking. Fill all four hand cavities in the hand mold. Make sure the clay is level like a "level teaspoon" say of flour. Roll up a

meatball-sized ball of clay, push against each filled hand section; this will act like a handle to help you remove the hand pieces. Fit the hand sections back to back to create 2 separate hands. Smooth the edges. If you lose the detail on your fingernails, use the back of your craft knife or a nail head to put them back into the clay.

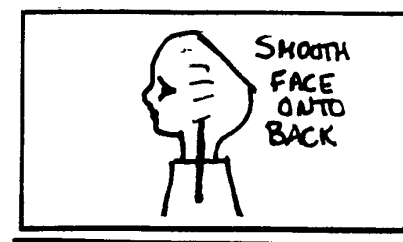
- 5 Using a crochet needle, or similar smoothing tool, smooth the seam lines out of each hand.
 - (a) If there was not enough clay put into each cavity, you will need to fill tiny holes before smoothing.
 - (b) If there was too much clay, you will need to slice off excess clay with the X-acto knife before smoothing seams.
5. Once the hands are fully smoothed, touch up any fingernail lines you might have lost while smoothing. Add knuckle wrinkles. Pose hands in holding or pointing or similar position.
- 6 Before baking, insert the unbaked hands onto the arm wires, inserting about an inch or an inch and a half. Remove. (The hands will be glued onto the wires after baking.)

7. Roll up a piece of foil to mimic the size of an imaginary back of a skull. Roll out a thin piece of polymer clay and cover the foil skull. Insert onto a 6 inch piece of wooden skewer. (You will be adding the Santa Face to the front of this head armature.)



8. Roll a big ball of clay and roll into a cone shape. Put the tip of the cone into the nose section of the mold, and push the rest of the clay straight into the Face Mold. Without moving the clay in and out of the features in the Face Mold, spread the clay out to fill in the sides of the face. Roll up a second large ball of clay. Press onto the clay in the mold. This will act as a “handle” and will help you to remove the face out of the Face Mold. Once you removed the face, if you have any “crease” marks, smooth them with your crochet needle.

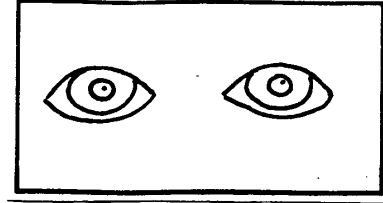
9. Attach the Santa Face to the back of the skull armature and smooth the sides. Build up a small neck raising the head a natural neck length. You don't have to be too particular and you don't need ears because the neck and ears will all be covered with hair and hood. You can flatten the crown of the head so you can rest it on this while baking. This too will all be covered with hair.



10. Once the head and hands are fully smoothed, place on the ceramic tile and bake in the oven according to the polymer clay manufacturer's instructions. Be sure you have the wire holes for your hands and the skewer hole for the neck.

Painting the Face:

1. Paint the eyes white.
2. Using blue or brown, paint irises. 3. Paint black pupils in the center of each iris. 4. When dry, add tiny, tiny, little dots of white at 2:00 on the edge of the pupil.
5. Water down grey paint and lightly paint two small eyebrows. You can put a series of white and grey small lines to create a "salt and pepper" eyebrow.
6. Water down brown and red paint mixed together until it is the consistency of ink and paint on the lips. You can use a dot of this color to blush the cheeks or you can use old blush makeup to do the same.

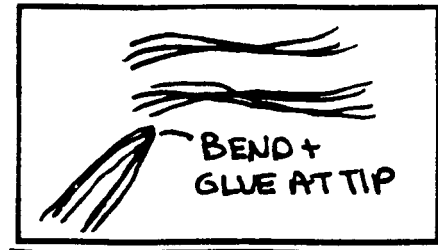


Making the Wig

1. Using mohair or angora knitting wool, make a tiny 6 - 7 inch strip of hair. Put a little dab of glue right under the nose. Glue on the mustache. Make sure the lip shows.



2. Make 20 or more slightly thicker 6 - 7 inch strips of hair. Fold each bundle of hair and with a dot of glue, attach to the santa face along the face outline. After the face is outlined in hair, begin to fold and glue the other strips of hair all around the face and beard area, completely covering the santa head.

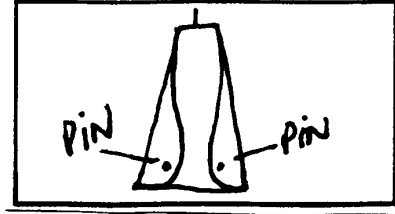


Use smaller strips of hair around the bang area, if needed.

Making the Santa Outfit and Toy Bag

1. Tape the pattern pages at the ABC & D marks together to create one large pattern piece. Cut out your paper pattern pieces, lay them on your fabric and cut out.
2. Cut out the inner garment and toy bag of the green fabric. Cut out the outer garment and hood from the red fabric, cutting out the tiny circle at the top as indicated.
3. Poke a hole in the top of the inner garment to insert onto the wooden skewer that is sticking out of the top of the cone.

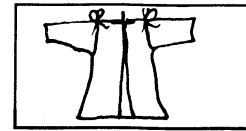
4. Remove and hem the green inner garment (fold over 1/4 inch, fold over another 1/4, enclosing the raw edges, and stitch).
5. Insert the hemmed inner garment onto the skewer and wrap the sides around the cone. Pin into place, embedding the pins into the Styrofoam cone.



6. Cut up the front of the outer garment where indicated. Poke a hole in the top of the outer garment where indicated. With right sides together, stitch sleeves and sides. Hem the front and bottom using the fold-over method described above. With right sides together, stitch the hood pieces together and run a gathering thread along the neckline.
7. Stitch the toy bag pieces separately (making two toy bags). Insert one toy bag into the other so the inside and outside both have the right sides of the fabric showing. Fold over 1/4 inch hem on both bags, matching the side seams. Stitch closed.
8. Slightly gather the hood and then stitch to the back of the outer garment.
9. Run a gathering stitch through the wrist section of the outer garments.
10. Using a whip stitch, stitch the boa up the front of one side of the outer garment, around the hood, and down the other side of the outer garment.

Putting the Santa Together

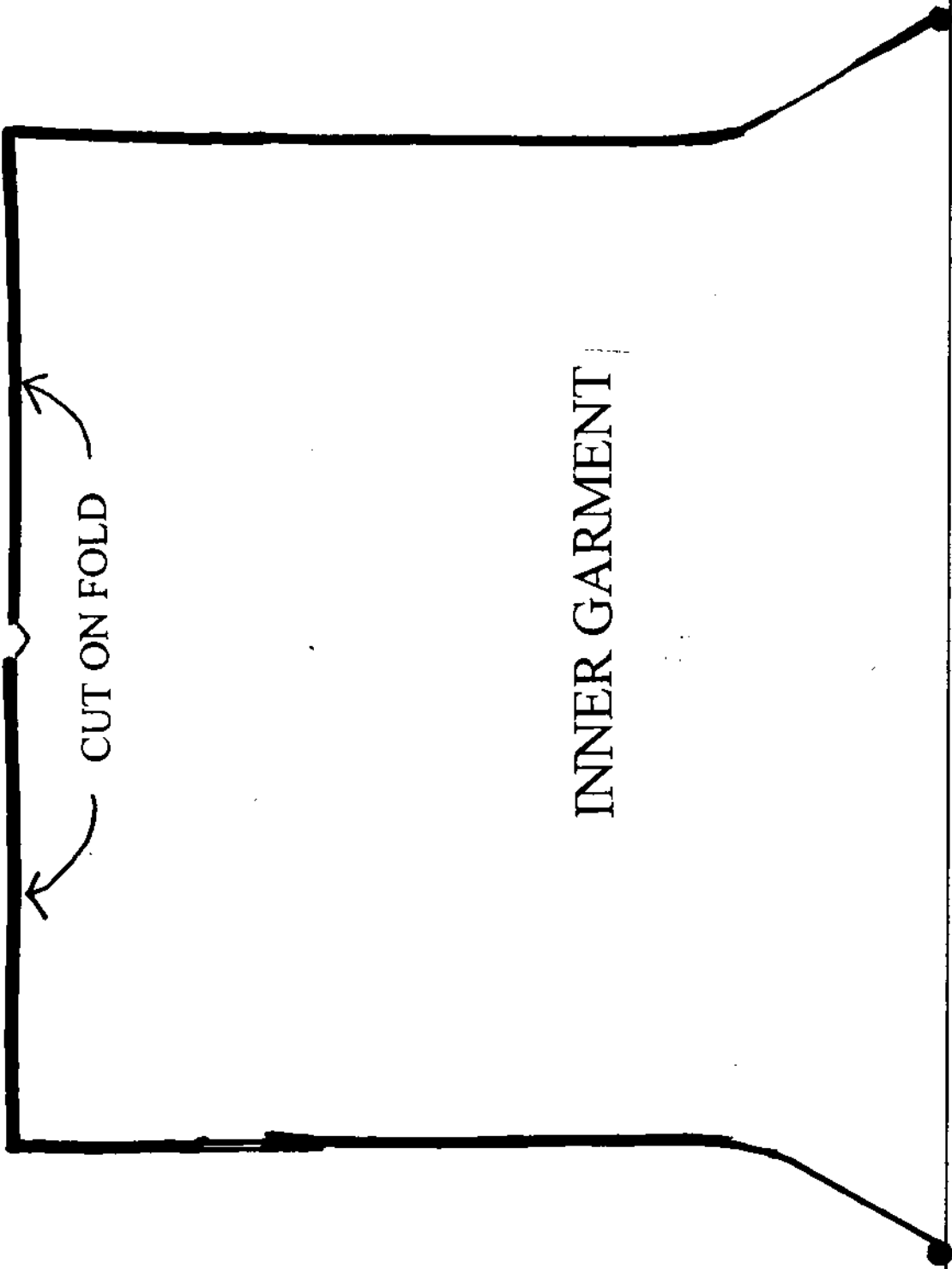
1. Glue the head section onto the top of the cone. Glue the hands onto the arm wires.
2. Put on the outer garment and tie the sleeves onto the shoulders as shown.



3. Gather the sleeve around the wrist of the hand and tie a knot. You can leave the sleeve plain, to show the hands better; or you can whip stitch boa around the wrist as well.
4. Glue the Santa onto the oval wooden base, leaving enough space for the toy bag and any other embellishments you intend to use.
5. Stuff the toy bag with paper towels to fill it. Glue miniature toys and stuffed animals on the top of the paper towel so they stick out of the toy bag.
6. Using dots of glue, open the coat to expose as much of the inner garment as you want.

(Copyright design owned by Regina Edmonds)

White Gothic Studios
 4890 NW 13th Terrace
 Pompano Beach, FL 33064
 Phone: 954-420-5120
 Website: www.whitegothic.com



INNER GARMENT

CUT ON FOLD

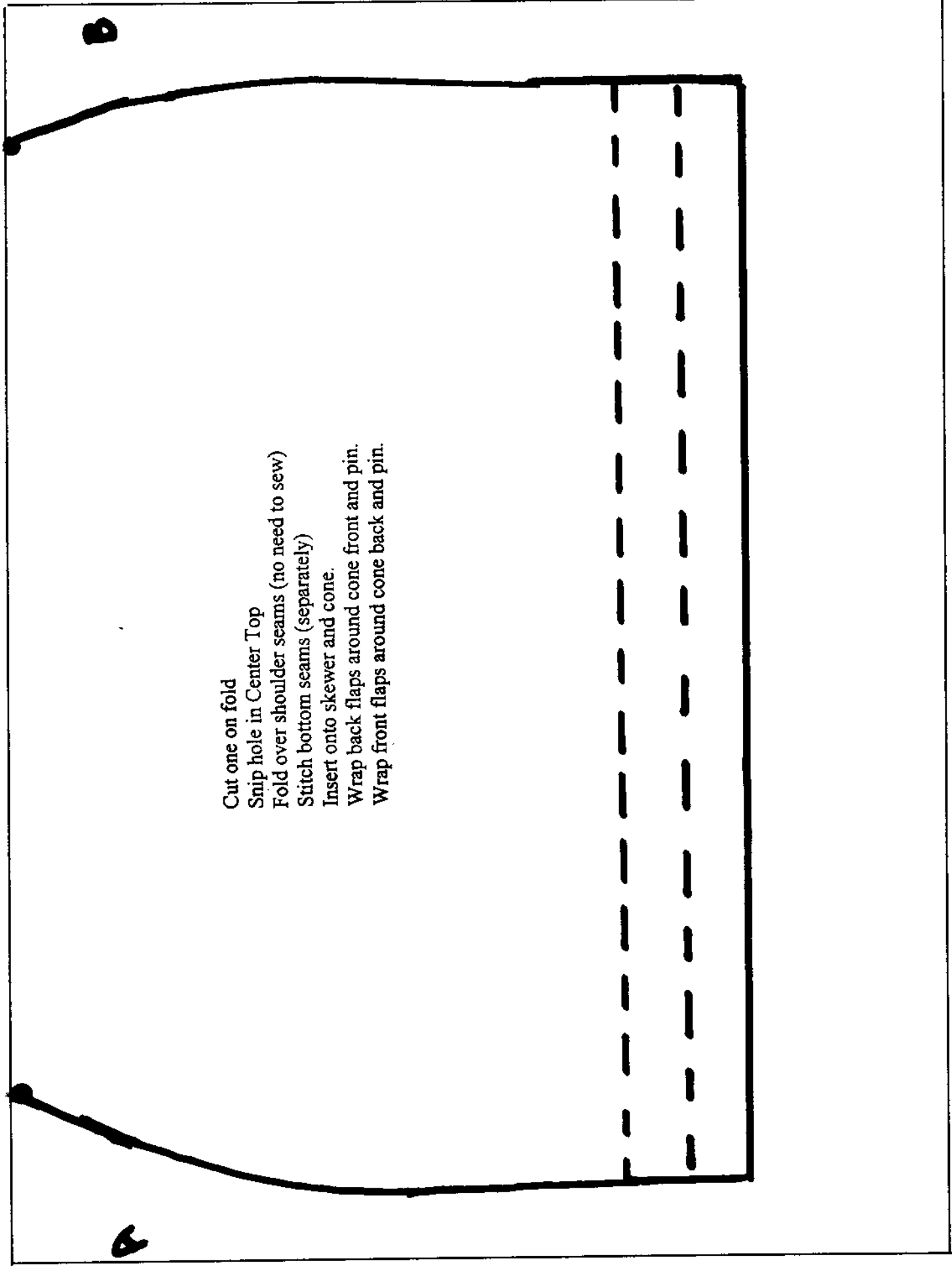
B

A

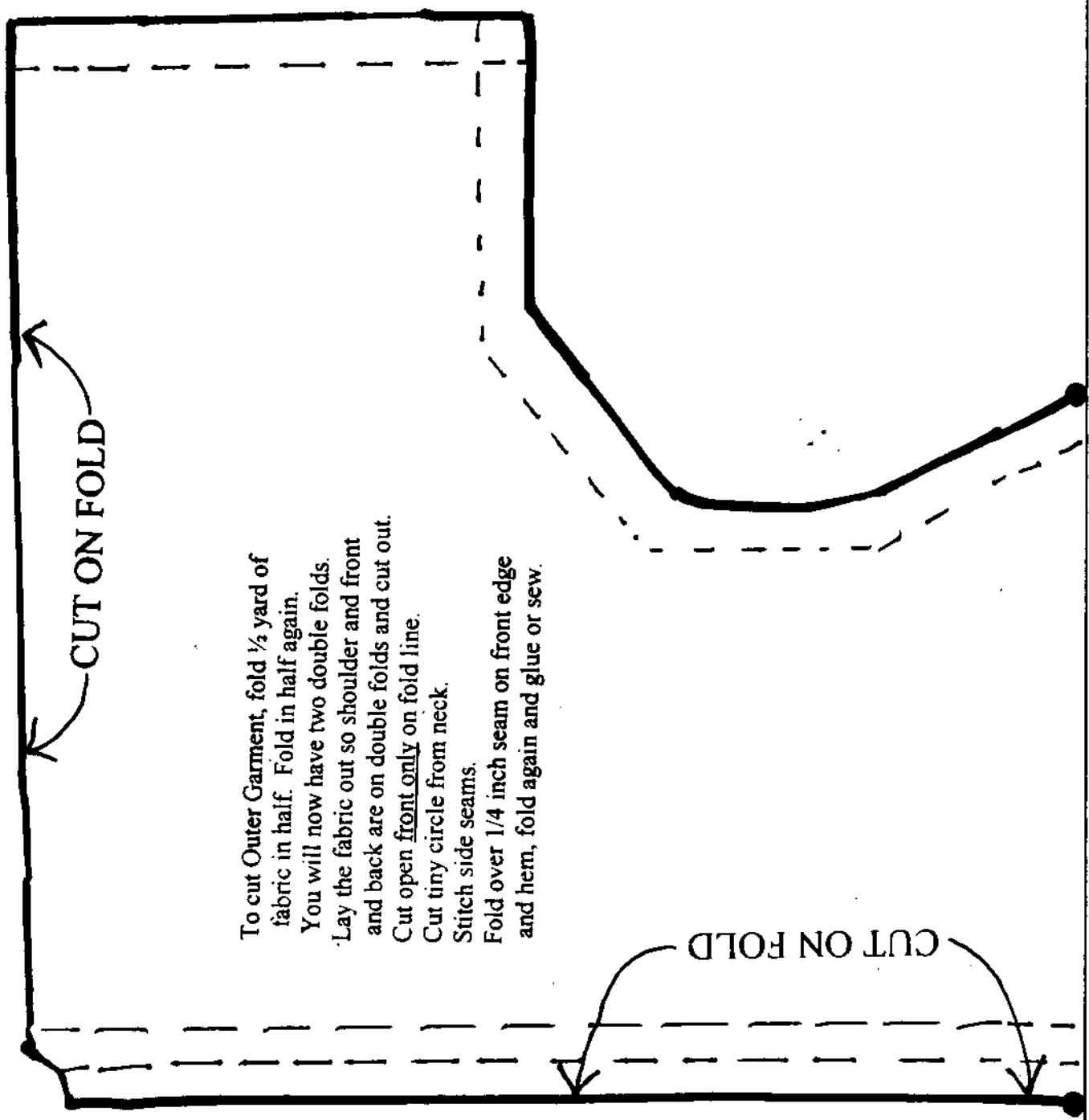
B

Cut one on fold
Snip hole in Center Top
Fold over shoulder seams (no need to sew)
Stitch bottom seams (separately)
Insert onto skewer and cone.
Wrap back flaps around cone front and pin.
Wrap front flaps around cone back and pin.

A



D

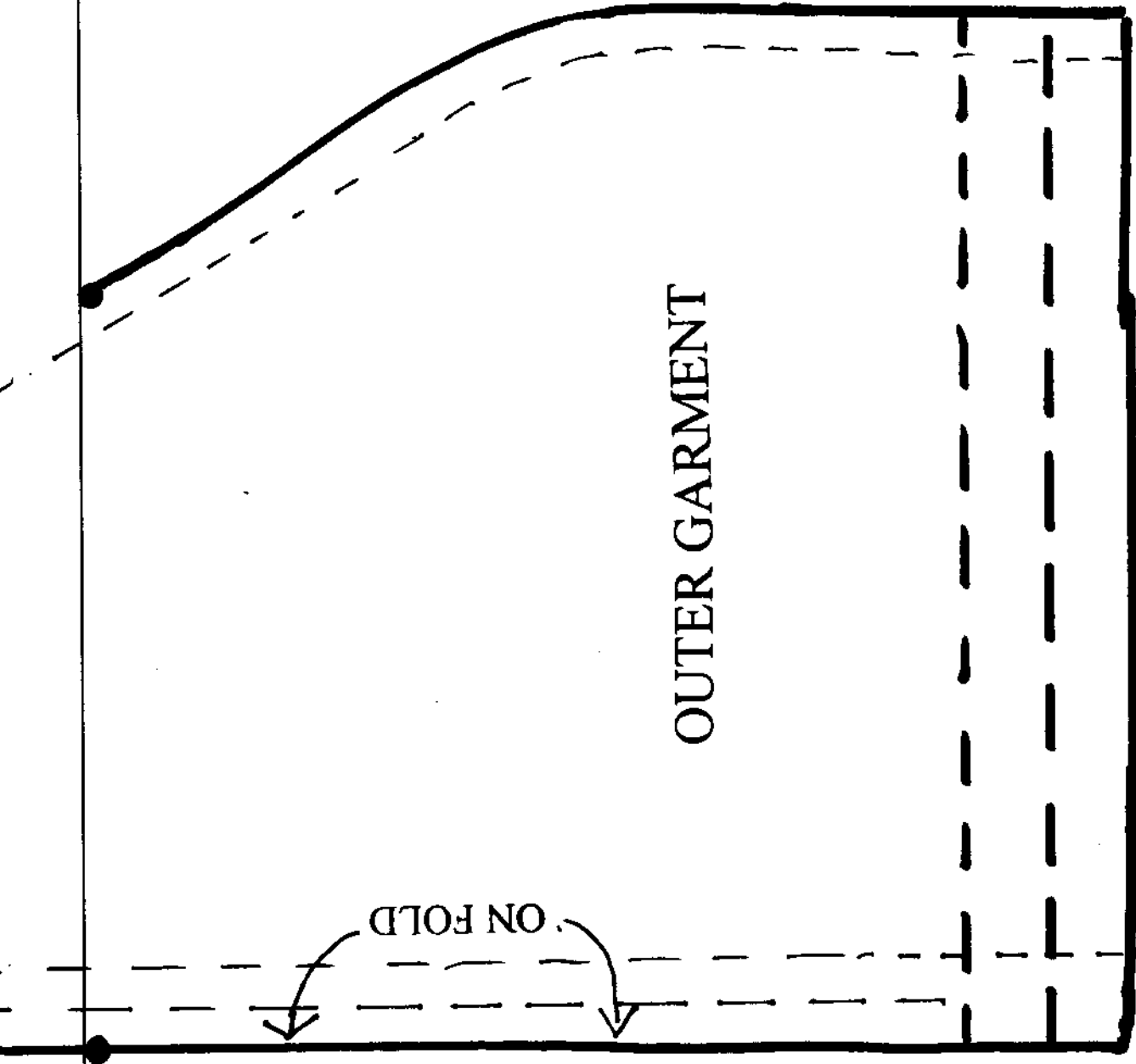


To cut Outer Garment, fold $\frac{1}{2}$ yard of fabric in half. Fold in half again. You will now have two double folds. Lay the fabric out so shoulder and front and back are on double folds and cut out. Cut open front only on fold line. Cut tiny circle from neck. Stitch side seams. Fold over $\frac{1}{4}$ inch seam on front edge and hem, fold again and glue or sew.

CUT ON FOLD

C

D

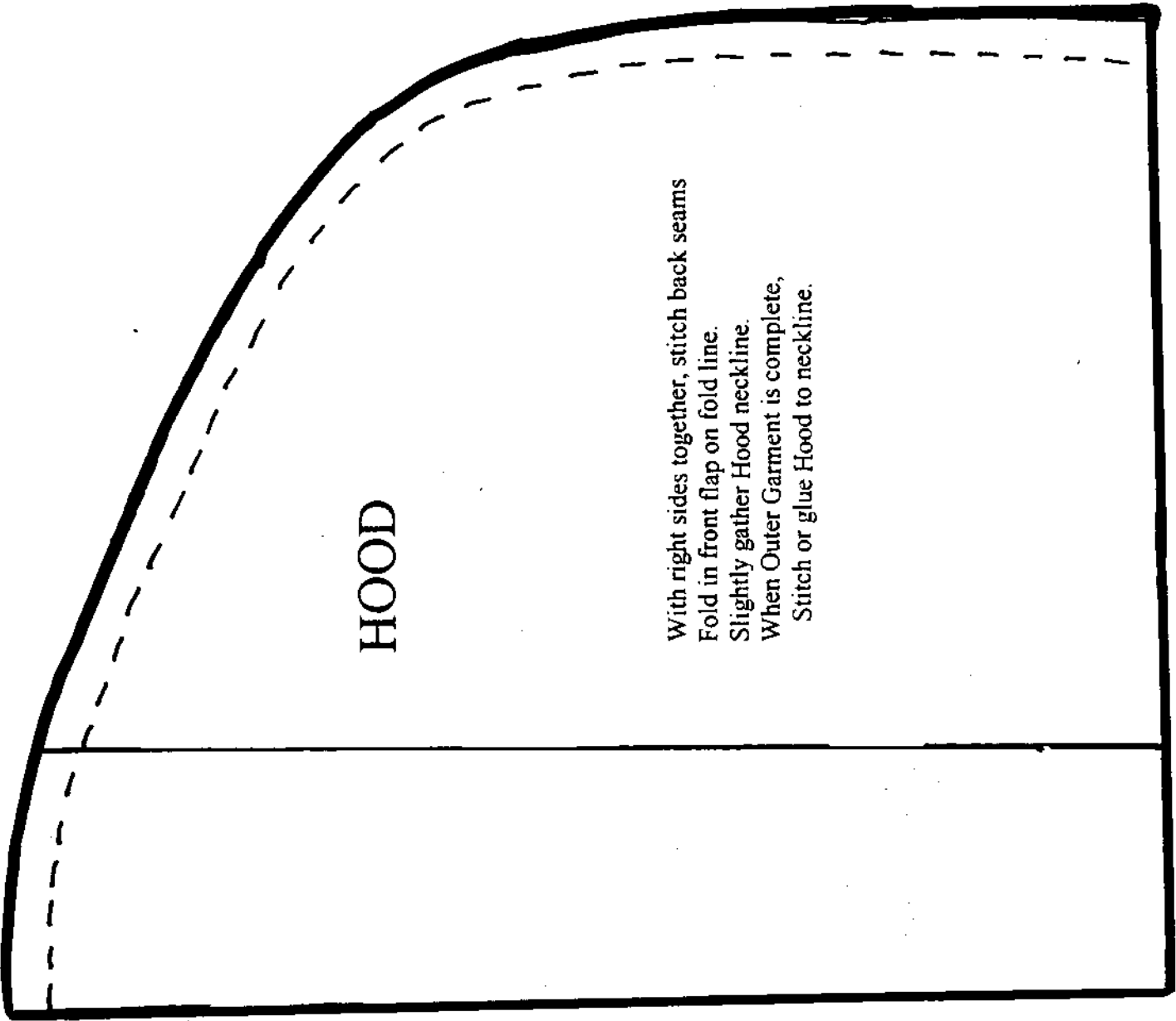


OUTER GARMENT

ON FOLD

C

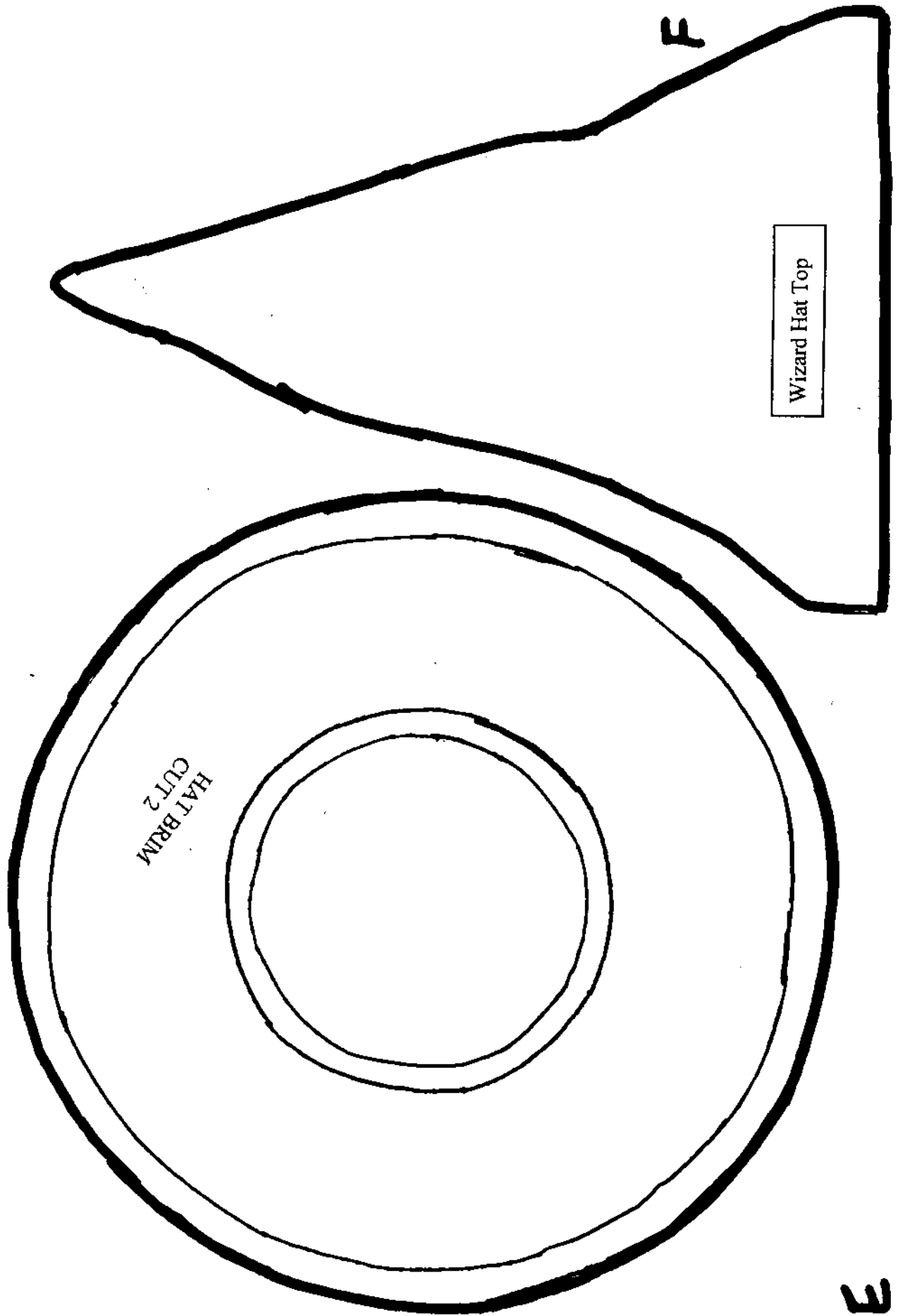
F



HOOD

With right sides together, stitch back seams
Fold in front flap on fold line.
Slightly gather Hood neckline.
When Outer Garment is complete,
Stitch or glue Hood to neckline.

E



Wizard Hat Top

HAT BRIM
CUT 2

F

E

Toy Bag

Cut four Toy Bags

Stitch around the sides and bottom.

Make two separate bags, one in each color.

Insert one bag into the other making sure right side of fabric is showing inside and outside. Fold over 1/4 inch on top of each bag. Stitch closed.



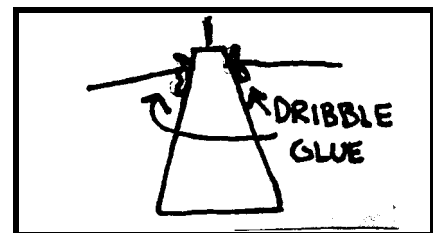
Wizard Mold Project

Supplies:

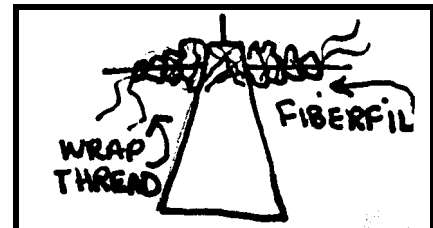
Wizard/Santa Face and Hand molds Glue Gun
 6 oz. flesh colored polymer clay Toothpick
 Xacto knife Ceramic tile
 Minuscule amount of acrylic paint in brown, white, blue, red, brown, gold and black
 Translucent powder or talcum powder
 Large Styrofoam cone (4" diameter - 10 - 11 inches tall)
 Oval Wooden Base, White Mohair, Brown velvet fabric scrap (1/8 yard)
 Beige gold fabric for inner garment (1/8 yard)
 Wooden skewer
 crochet needle or other sculpting tool,
 12 inches medium gauge wire, sewing thread,

Preparing the Cone for the Wizard Head:

1. Slice off approximately 1 inch from the top of the cone. Break off 6 inch piece of wooden skewer and insert into the top of the cone.
2. Poke the 12 inches of wire through the cone approximately one inch below the sawed-off top of the cone. Using your glue gun, dribble glue on each side of the cone, securing the wire into the cone.



3. Wrap pieces of fiberfill around the wire, creating an arm and shoulder thickness. Secure the fiberfill by wrapping the thread around and around the fiberfill to hold it.



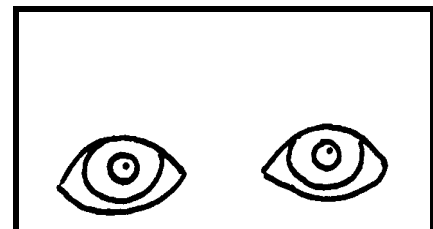
Molding Wizard's Head and Hands:

4. Dust the inside of the molds with translucent powder to prevent the clay from sticking.
5. Condition clay by kneading according to directions. Roll little balls of clay, about the size you need to fill each cavity of the mold, until very smooth and all the crease lines are gone.
6. Push the clay into each cavity of the mold until completely full. Don't over fill.
7. Fit all cavities of the hand mold evenly. Roll up a ball of clay and press against the back of each hand part. Once they are all removed, put the hands together like puzzle pieces. Using your sculpting tool, smooth the sides of the hands, erasing the connection lines.
8. If there was not enough clay put into each cavity, you will need to fill tiny holes before smoothing the sides. If there was too much clay, you will need to slice off excess clay with the X-acto knife before smoothing seams.
9. Once the hands are fully smoothed, push in fingernail beds. Add knuckle wrinkles. Pose hands in holding or pointing or similar position.
10. Before baking, insert the unbaked hands onto the arm wires, inserting about an inch or an inch and a half. Remove. (The hands will be glued onto the wires after baking.)
11. Roll up a piece of foil to mimic the size of an imaginary back of a skull. Roll out a thin piece of polymer clay and cover the foil skull. Insert onto a 6 inch piece of wooden skewer. (You will be adding the Wizard Face to the front of this head armature.)
12. Roll a big ball of clay and roll into a cone shape. Put the tip of the cone into the nose section of the mold, and push the rest of the clay straight into the Face Mold. Without moving the clay in and out of the features in the Face Mold, spread the clay out to fill in the sides of the face. Roll up a second large ball of clay. Press onto the clay in the mold. This will act as a "handle" and will help you to remove the face out of the Face Mold. Once you remove the face, if you have any "crease" marks, smooth them with your crochet needle.
13. Attach the Wizard Face to the back of the skull armature and smooth the sides. Build up a small neck raising the head a natural neck length. You don't have to be too particular and you don't need ears because the neck and ear areas will all be covered with hair and hood. Remove the clay head from the top of the cone and skewer. You can flatten the crown of the head so you can rest it on this while baking. This too will all be covered with hair.
14. Once the head and hands are fully smoothed, place on the ceramic tile and bake in the oven according to the polymer clay manufacturer's instructions.



Painting the Face:

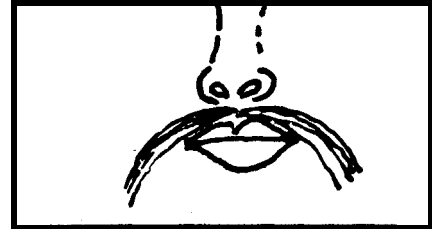
1. Paint the eyes white.
2. Using blue or brown, paint the irises. Paint black pupils in the center of each iris. When dry, add tiny, tiny, little dots of white at 2:00 on the edge of the pupil.



3. Water down white or brown paint and lightly paint two small eyebrows.
4. Water down brown and red paint mixed together and paint on the lips. You can use a dot of this color to blush the cheeks or you can use blush makeup to do the same.

Making the Wig

1. Using mohair or angora knitting wool, make a tiny 6 - 7 inch strip of hair. Put a little dab of glue right under the nose. Glue on the mustache. Make sure the lip shows.



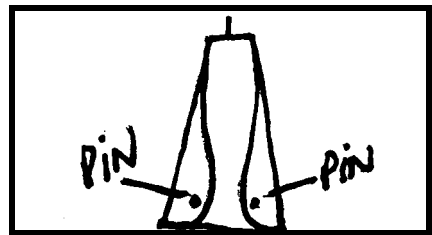
2. Make 20 or more slightly thicker 6 - 7 inch strips of hair. Fold each bundle of hair and with a dot of glue, attach to the Wizard face along the face outline. After the face is outlined in hair, begin to fold and glue the other strips of hair all around the face and beard area, completely covering the Wizard head.



3. Use smaller strips of hair around the bang area, if needed.

Making the Wizard Outfit, Belt and Staff

1. Cut out the inner garment out of the beige fabric. Cut out the outer garment and hat from the brown velvet fabric, cutting out the tiny circle at the top of the outer garment as indicated.
2. Poke a hole in the top of the inner garment to insert onto the wooden skewer that is sticking out of the top of the cone. Remove and hem the beige inner garment (fold over 1/4 inch, fold over another 1/4, enclosing the raw edges, and stitch).
3. Insert the hemmed inner garment onto the skewer and

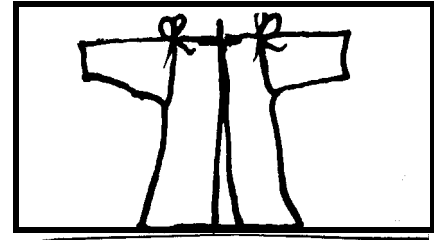


- wrap the back sides around the front of the cone. Pin into place, embedding the pins into the Styrofoam cone. Wrap the front sides around the back of the cone and pin into place.
4. Cut up the front of the outer garment where indicated. Poke a hole in the top of the outer garment where indicated. With right sides together, stitch sleeves and sides. Hem the front and bottom using the fold-over method described above.
 5. Cut two of the Hat Brim. Cut Two of the Hat Top. With right sides together (RST), stitch around the outer edge of the Hat Brim. With RST, stitch the Hat Top together around the edges. Open the Hat Top and with RST, stitch the Hat Tom to the inner edge of one side of the Hat Brim. Fold over 1/4 inch on remaining side of Hat Brim. Whipstitch closed, hiding the seam at the inner Hat Brim.

6. Roll out tissue thin polymer clay. Cover the wood skewer. Roll a ball of clay and place on the top creating the “wand”. Then roll out a thin coil of clay and randomly drape the coil around the top of the Wand. After baking, paint the wand brown. (If you use brown polymer clay, you don’t have to paint the wand) Paint the coil with a gold metallic paint.
7. To make the “belt”, you will need a piece of 1/8 inch gold ribbon. Attach little balls of clay to the ends of the ribbon to give it interest.

Putting the Wizard Together

1. Glue the head section onto the top of the cone. Glue the hands onto the arm wires.
2. Put on the outer garment and tie the sleeves onto the shoulders as shown. Tie tightly creating a puff sleeve.
3. Let the sleeves hang loose. You can run a little glue or paint or along the edge to protect it from fraying.
4. Glue the Wizard onto the oval wooden base, leaving enough space for the staff and any other embellishments you intend to use.
5. Using dots of glue, open the coat to expose as much of the inner garment as you want.



Making the Staff

The staff is made by painting a long wooden skewer brown and allowing it to dry. Roll up a long snake of brown clay and wrap around the top of the skewer. Bake according to manufacturer’s directions. Using bronze Rub-n-Buff, dip your finger into the Rub-n-Buff and rub on the top of the snake to give the staff a little whimsy.

(Copyright design owned by Regina Edmonds)

Creative Originals by Regina

4890 NW 13th Terrace

Pompano Beach, FL 33064

Phone/Fax: 954-420-5120

fairy111@bellsouth.net

www.pushmolds.com



Santa Face Ornament Project

Supplies:

Santa Face Push Mold	Glue Gun
2 oz. flesh colored polymer clay	Toothpick
1 oz. red and green polymer clays	Ceramic tile
2 oz white polymer clay	Xacto knife
Minuscule amount of acrylic paint in brown, white, blue red, black	Clay gun
Translucent powder	Ornament hook
Set of steel wax carver tools or a steel crochet hook or large needle	

Molding Santa's Face:

1. Dust the inside of the mold with translucent powder to prevent the clay from sticking.
2. Condition clay by kneading until soft and pliable. Roll a large cone of clay, about the size you need to fill the facial cavity of the mold, until very smooth and all the crease lines are gone.
3. Push the tip of the cone of clay into the nose cavity of the mold, and continue pushing the clay into the mold until it is full and level. Don't over fill. Roll up another ball of clay and push against the clay in the mold. This will act as a clay handle and help you remove the molded clay without marring it.
4. Using a wax carver clay tool, or crochet needle or large steel needle, or similar smoothing tool, smooth any creases that are in the clay.
5. You can deepen the creases around Santa's eyes or change his smile or smirk a little bit for each santa.

Santa's Hair and Beard

1. Condition your white clay and roll into a thin coil, slightly shorter than your clay gun.
2. Insert the spaghetti strings disc into the end of the clay gun, and extrude long spaghetti strings. Take groups of 5 to 6 pieces of "hair" and drape around santa's face and beard area, following the picture above for placement.
3. Roll up a ball of red clay and roll out a large pancake of clay about 1/4 inch thick. Cut out a pie-shaped triangle and place on Santa's head like a *birthday hat*. Take the top of the hat and fold it over onto itself to look like a "*stocking hat*"
4. Using more of your white spaghetti strings, clump several very short pieces of strings into a *pom-pom* shape and place on the end of your stocking hat.

5. Roll up two long thin coils of white clay and twist and place around the edge of the stocking hat.
6. Make 3 small leaf shapes in green polymer clay. Using the back of your exacto knife, indent *leaf lines* into your leaves. Add a couple of tiny red berries to complete your ornament.
7. In order to customize your ornament, you can create instead a 3/4 inch flat white lip instead of the clay twist and when you are done, you can paint on *Christmas 2004* or *Baby's First Christmas* on the Santa ornament. They make wonderful gifts!

Curing the Ornament:

1. Depending upon which polymer clay you are using, bake the polymer clay according to your manufacturer's instructions. Allow to fully cool.

Painting the Face:

1. Paint the entire eye areas white. You can add a little yellow to remove the starkness of the whites.
2. Using blue or brown, paint the irises. Paint black pupils in the center of each iris. When dry, add tiny, tiny, little dots of white at 2:00 on the edge of the pupil.
3. Water down brown paint and lightly paint two small eyebrows.
4. Water down brown and red paint mixed together and paint on the lips. You can use a dot of this color to blush the cheeks or you can use blush makeup to do the same.



(Copyright design owned by Regina Edmonds)

White Gothic Studios

Website: www.pushmolds.com

www.whitegothic.com

Email: reginaedmonds@bellsouth.net